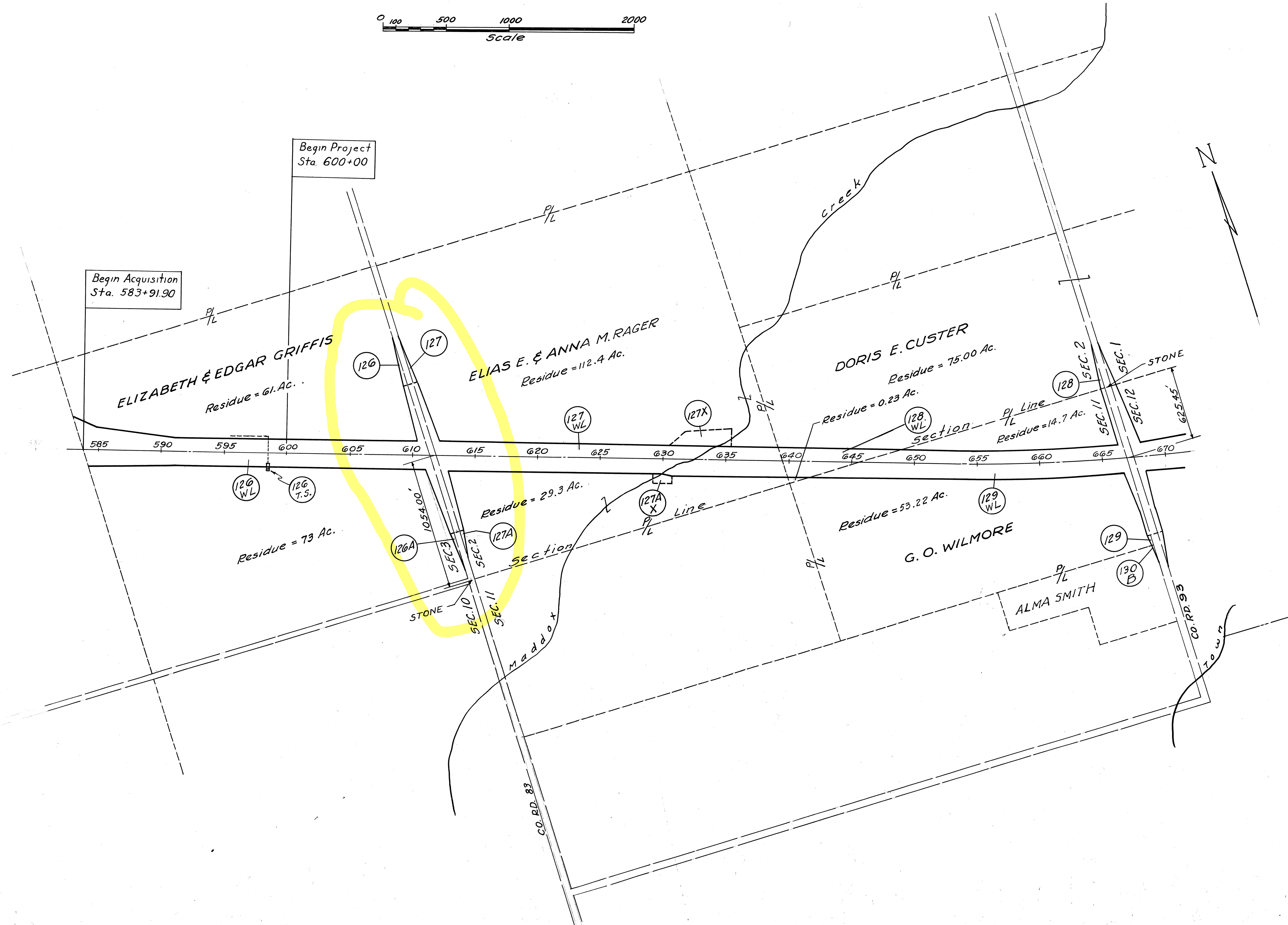


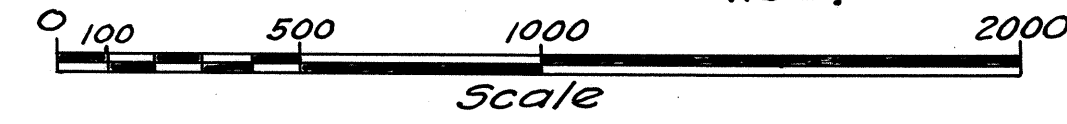
U.S. ROUTE 30 (VAN-30-
VAN WERT COUNTY
PLEASANT TWP. T.2S. R.2E.

DRAWN BY TNB

$$\frac{1}{30}$$


PROPERTY MAP

U.S. ROUTE 30 (VAN-30-
VAN WERT COUNTY
PLEASANT TWP. T.25. R.2E.
RIDGE TWP. T.25. R.3E.

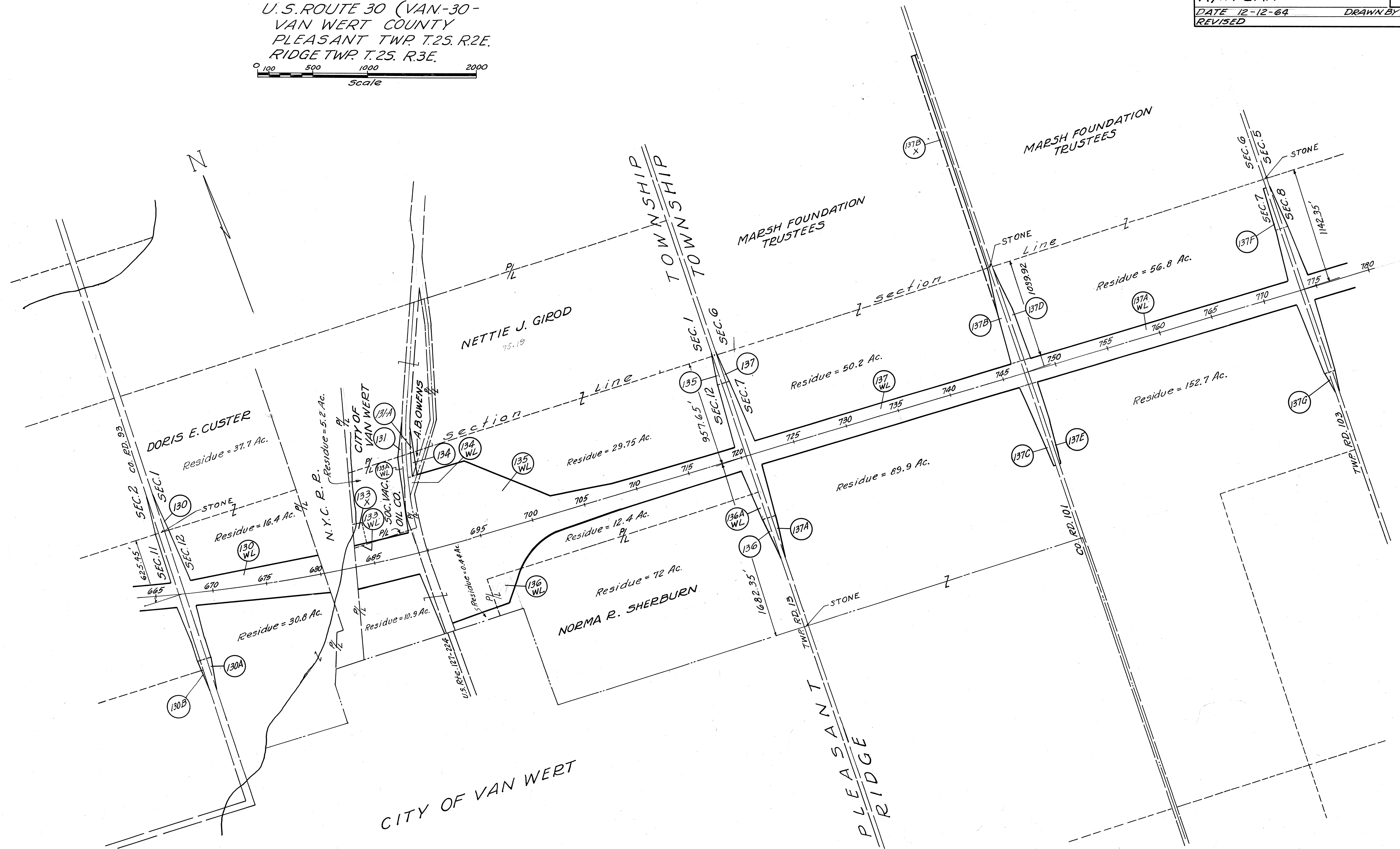


VAN WERT COUNTY
VAN-30-11.24
R/W PLAN

DATE 12-12-64
REVISED

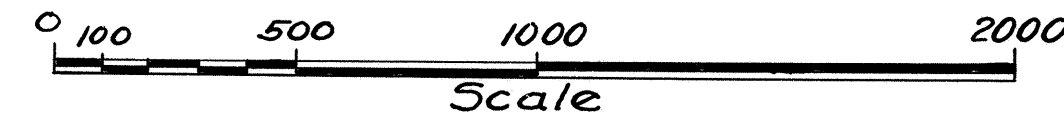
DRAWN BY TNB

2
30



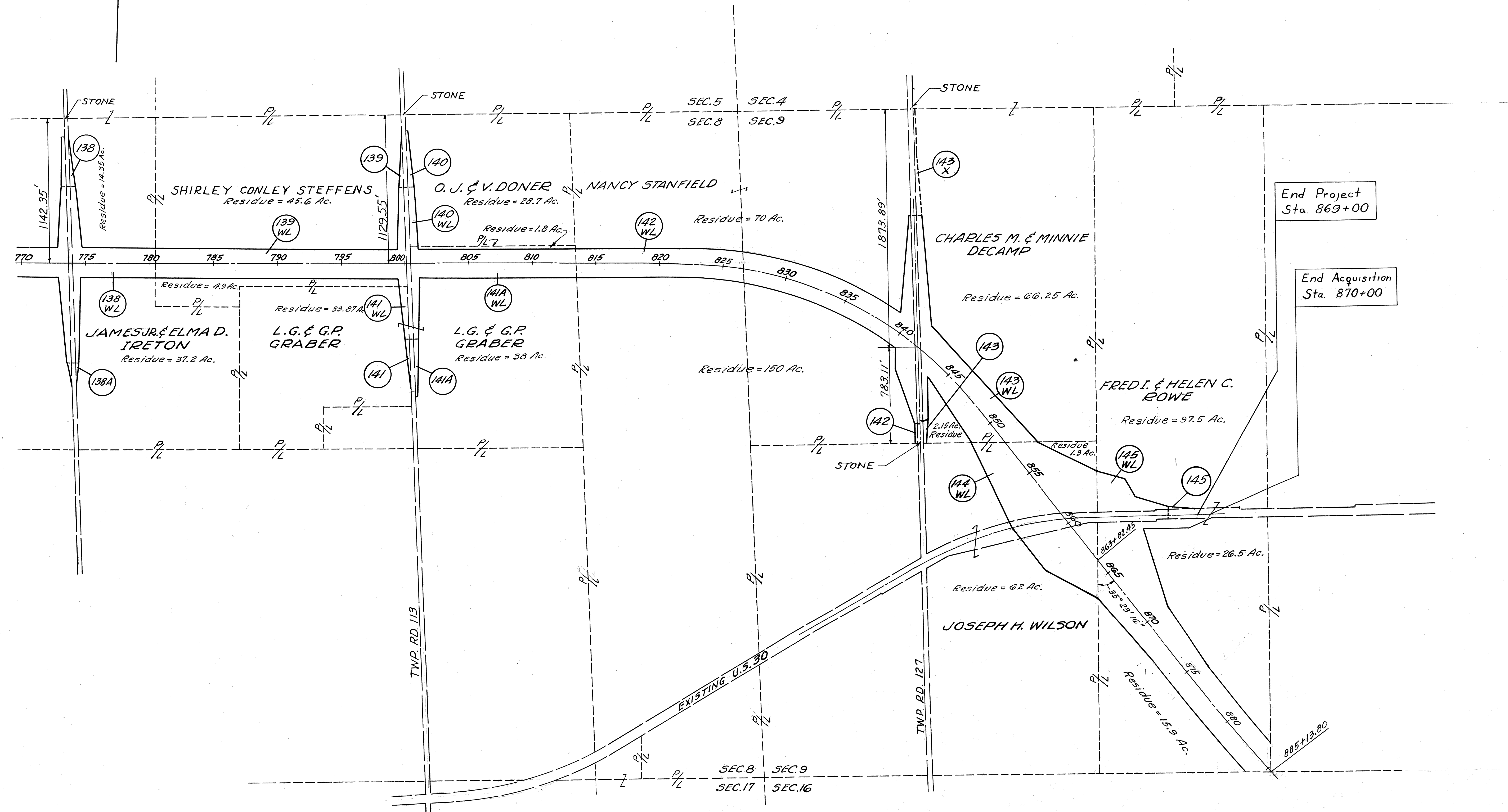
PROPERTY MAP

U.S. ROUTE 30 (VAN-30-
VAN WERT COUNTY
RIDGE TWP. T.2S. R.3E.



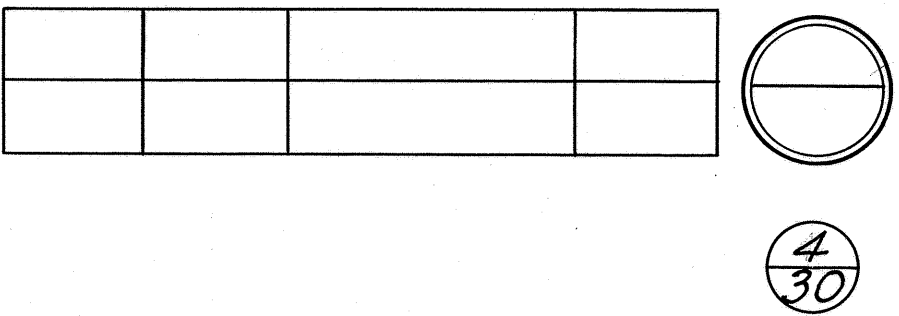
VAN WERT COUNTY
VAN-30-11.24
R/W PLAN
DATE 12-12-64
REVISED
DRAWN BY TNB

3
30



SUMMARY OF ADDITIONAL R/W REQUIRED

U.S. ROUTE 30 SECTION 11.24 VAN WERT COUNTY
TOTAL NUMBER OF OWNERS-20



PARCEL NO.	OWNER	DEED RECORD		DEED AREA	TO BE AQUIRED		RESIDUE		SHEET NO.	REMARKS
		BOOK	PAGE		LAND	BLDGs	LEFT	RIGHT		
126	Elizabeth & Edgar Griffiths	145	453	160 Ac	0.127 Ac	None	65 Ac.	77 Ac.	7	
126 A	" " "				0.127 Ac	"			7	
126 WL	" " "				17.07 Ac.	"			5-6-7	
126 T.S.	" " "								6	Jct. Box.
127	Elias E. & Anna M. Roger	166	93	160 Ac.	0.128 Ac.	None	112.4 Ac.	29.3 Ac.	7	
127 A	" " " " "				0.079 Ac.	"			7	
127 WL	" " " " "				16.676 Ac.	"			7-8-9	
127 WA	" " " " "								7	Drive
127 X	" " " " "				1.197 Ac.	"			9	
127 AX	" " " " "				0.267 Ac.	"			8-9	
128	Doris E. Custer	165	264	80 Ac.	0.124 Ac	None	0.23 Ac.	75 Ac.	11	
128 WL	" " "				3.743 Ac.	"			9-10	
129	G. O. Wilmore	86	209	80 Ac.	0.047 Ac.	None	14.7 Ac.	53.22 Ac.	11	
129 WL	" " "				12.967 Ac.	"			10-11	
130	Doris E. Custer	166	385	98.18 Ac.	0.133 Ac.	None	54.07 Ac	30.8 Ac.	11	
130 A	" " "				0.112 Ac.	"			11	
130 WL	" " "				10.600 Ac.	"			11-12	
130 X	" " "				0.54 Ac.	"			12	
130 WA	" " "								11	Drive
131	City of Van Wert				0.13 Ac.	None			15	
131 A	" " " " "				0.12 Ac.	"			15	
132 (Slope)	N. Y. C. R. R.				0.445 Ac	None			12	
132 A (Drive)	" " " "				0.320 Ac.	"			12	
132 BX (Chan)	" " " "				1.220 Ac.	"			12	
132 C (Slope)	" " " "				0.463 Ac.	"			12	
132 D (Ground)	" " " "				0.112 Ac.	"			13	
132 E (Sewer)	" " " "				0.131 Ac.	"			13	
132 F (Ground)	" " " "				0.085 Ac.	"			13	
132 G (Aerial)	" " " "				1.022 Ac.	"			13	
132 H (Ground)	" " " "				240 S.F.	"			13	
132 J (Ground)	" " " "				276 S.F.	"			13	
132 K (Ground)	" " " "				276 S.F.	"			13	
132 L (Ground)	" " " "				240 S.F.	"			13	
132 M (Ground)	" " " "				240 S.F.	"			13	
132 N (Ground)	" " " "				240 S.F.	"			13	
130 B	Alma Smith	145 130	273 378	15 Ac.	0.027 Ac.	None	14.53 Ac.		11	
133 WL	Soc. Vac. Oil Co.	136	179	6.87 Ac.	0.097 Ac.	None	5.00 Ac.		12	
133 A WL	" " " "				0.35 Ac.	"			12	
133 X	" " " "				0.54 Ac.	"			12	
134	Helen R. Cox				0.138 Ac.	None	0.011 Ac.		15	

PARCEL NO.	OWNER	DEED RECORD		DEED AREA	TO BE AQUIRED		RESIDUE		SHEET NO.	REMARKS
		BOOK	PAGE		LAND	BLDGs	LEFT	RIGHT		
134 WL	Helen R. Cox				0.17 Ac.	None			15	
134 WA	" " "								15	Drive
135	Nettie J. Girod	129	61	91.25 Ac.	0.241 Ac.	None	29.75 Ac.	12.4 Ac.	17	
135 WL	" " "				48.25 Ac.	10			12-14-15-16-17	
136	Norma R. Sherburn	123 162	584 151	77.03 Ac.	0.298 Ac.	None		72 Ac.	17	
136 WL	" " "				1.66 Ac.	"			14	
136 AWL	" " "				0.296 Ac.	"			17	
137	Marsh Foundation	139	628		0.103 Ac.	None			17	
137 A	" " "				0.184 Ac.	"			17	
137 WL	" " "				15.734 Ac.	"	50.2 Ac.	89.9 Ac.	17-18	
137 B	" " "				1.876 Ac.	"			18-19	
137 C	" " "				0.965 Ac.	"			18	
137 AWL	" " "				16.009 Ac.	"	56.8 Ac.	152.7 Ac.	18-20-21	
137 D	" " "				0.814 Ac.	"			18-19	
137 BX	" " "				2.668 Ac.	"			19	
137 F	" " "				0.321 Ac.	"			21	
137 G	" " "				0.092 Ac.	"	14.35 Ac.	37.2 Ac.	21	
138	James Jr. & Elma D. Ireton	151	159	57.27 Ac.	0.161 Ac.	None			21	
138 A	" " " " "	114	148		0.046 Ac.	"			21	
138 WL	" " " " "				5.227 Ac.	1			21-22	
139 WL	Shirley Conley Steffens	170	82	62.28 Ac.	11.434 Ac.	1	45.6 Ac.	4.9 Ac.	22-23	
139	" " "				0.161 Ac.	None			23	
140	O. James & Virginia Doner	161	422	30 Ac.	0.271 Ac.	None	28.7 Ac.		23	
140 WL	" " " "				0.831 Ac.	"			23	
141	L.G. & G.P. Graber	161	419	48.41 Ac.	0.138 Ac.	None			23	
141 WL	" " "	161	419		0.809 Ac.	"		38.87 Ac.	23	
141 A	" " "	149	2		0.310 Ac.	"			23	
141 AWL	" " "	149	2		7.841 Ac.	"	1.8 Ac.	38 Ac.	23-24	
142 WL	Nancy I. Stanfield.	103	566	238 Ac.	17.877 Ac.	None	70 Ac.	150 Ac.	24-25	
142	" " "				0.030 Ac.	"			27	
143	Charles M. & Minnie Decamp	102	96	80 Ac.	0.132 Ac.	None	66.25 Ac.	2.15 Ac.	27	
143 WL	" " " "				10.480 Ac.	7			26-27	
143 X	" " " "	105 106 161 117 103 130	281 205 612 53 487 568		0.530 Ac.	None			27	
144 WL	Joseph H. Wilson			80 Ac.	17.528 Ac.	None	1.3 Ac.	62 Ac.	28	
145 WL	Fred I. & Helen C. Rowe	156	245	160 Ac.	19.200 Ac.	3	97.5 Ac.		28-29-30	
145	" " " " "				0.101 Ac.	None	26.5 Ac.	15.9 Ac.	29	
145 T.S.	" " " " "				0.67 Ac.	"			29	Temp. runaround

Date	Remarks	By

Russell & Margaret Wells



Sta. 570+00

Sta. 585+00

Begin Acquisition
Sta. 583+91.90

583+09.66
260'
5-48° 52' 20" E
206.45' L.A. R/W
Work Limit

272.10' PL
N 00° 46' 21" E

72° 26' 48"

571

572 Survey 573

574

575

576

577 571° 40' 07" E 578

579

580

581

582

583

584

141.59'
1/2 Sec. Line
x 91.90

LA R/W

584+34.60
135'

End Sheet

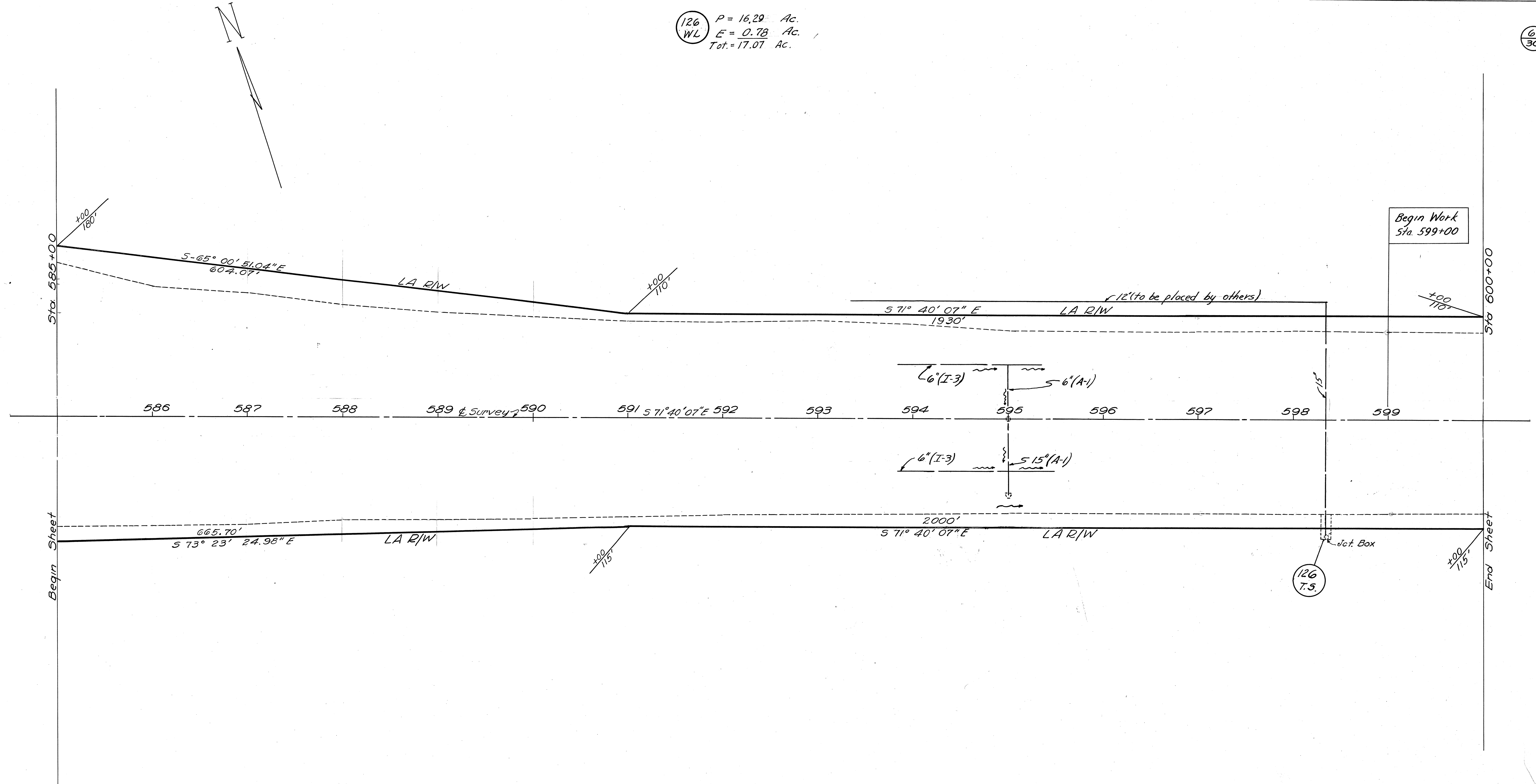
Begin Sheet

10' Dirt Farm Lane

Elizabeth & Edgar Griffis

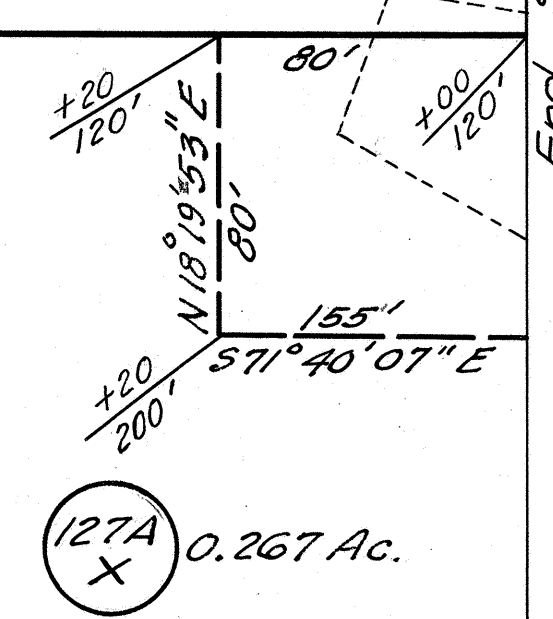
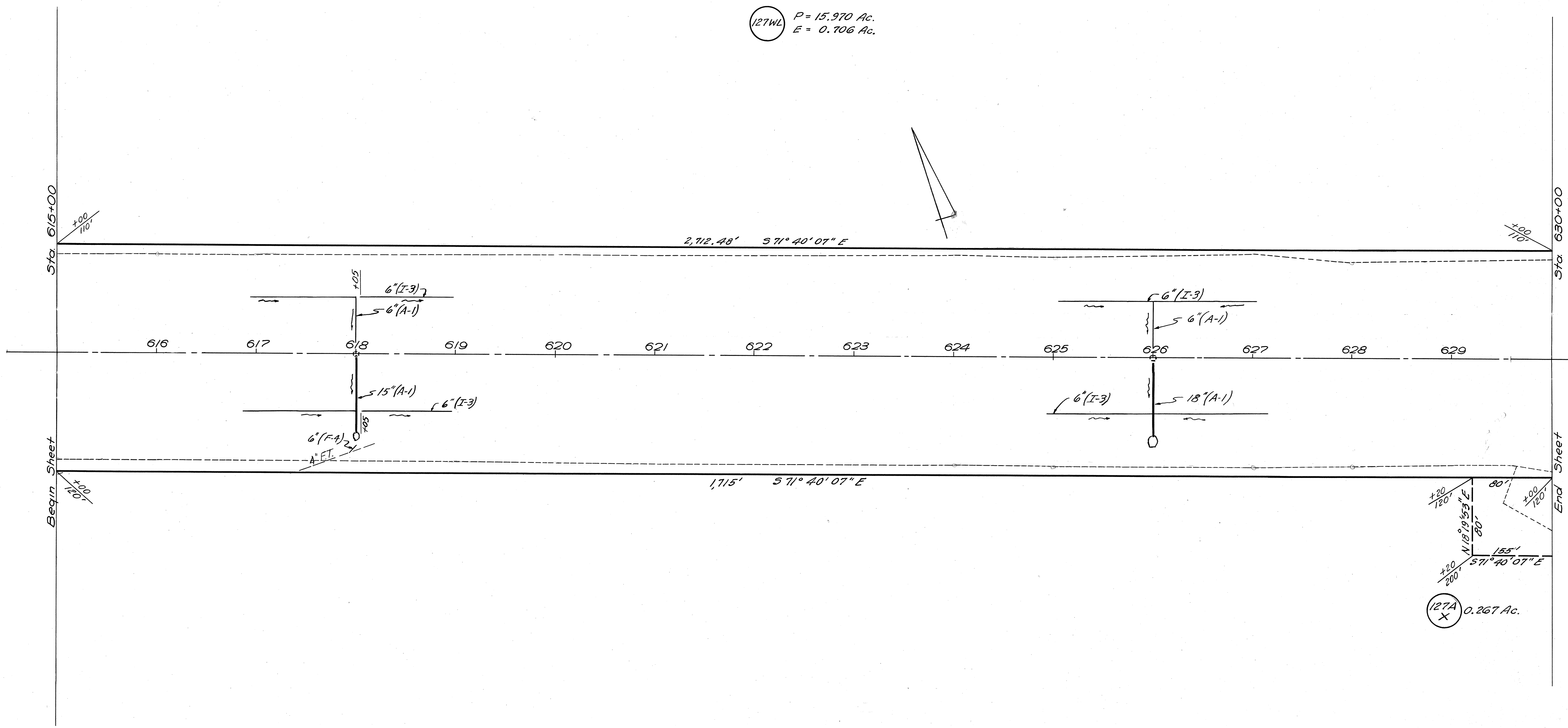
126 P = 16.29 Ac.
WL E = 0.78 Ac.
Tot. = 17.07 Ac.

6
30



ELIAS & ANNA M. RAGER

(127WL) P = 15.970 Ac.
E = 0.706 Ac.



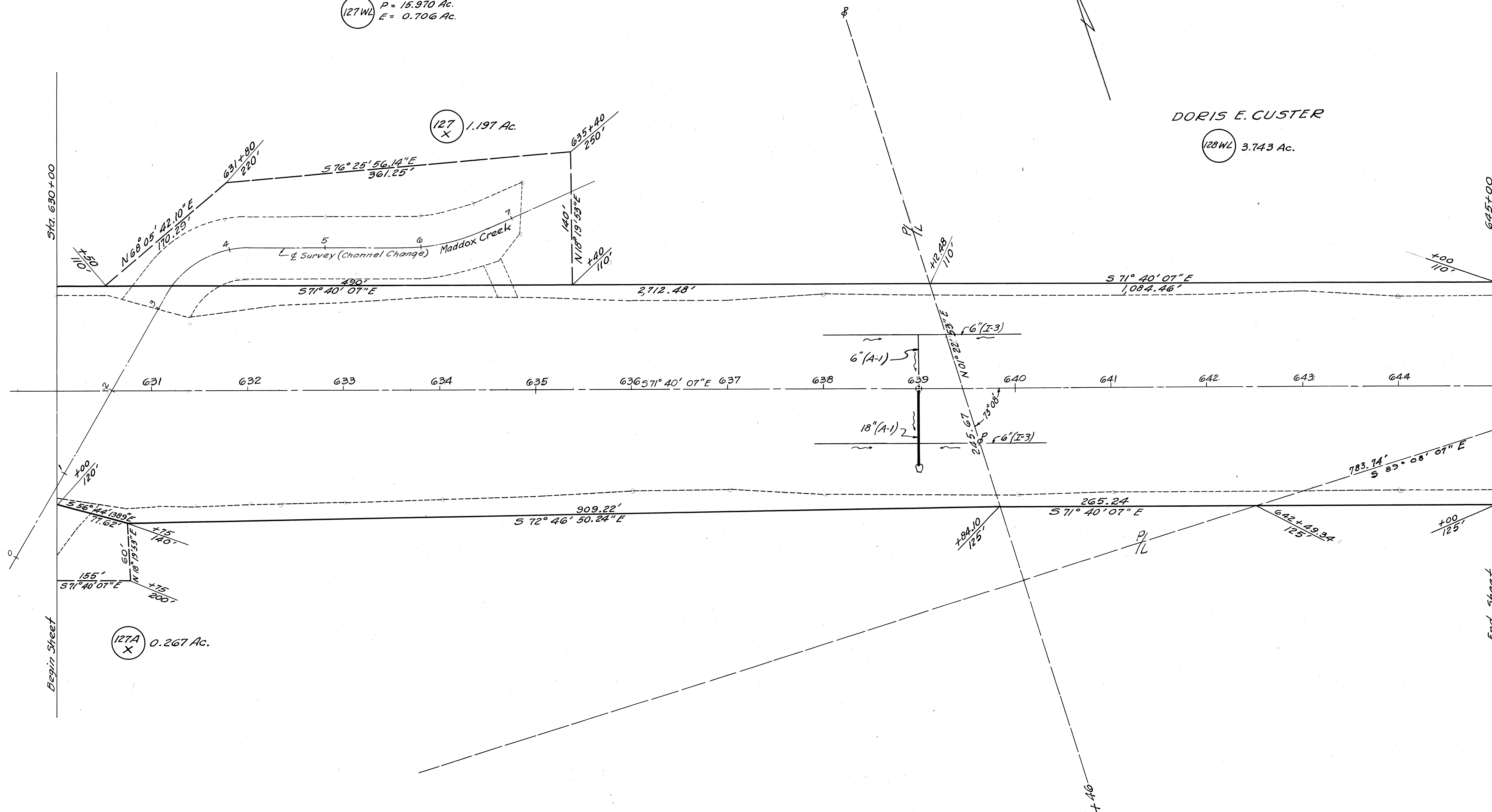
ELIAS E. & ANNA M. RAGER

(127WL)
P = 15.970 Ac.
E = 0.706 Ac.

(127X)
1.197 Ac.

DORIS E. CUSTER

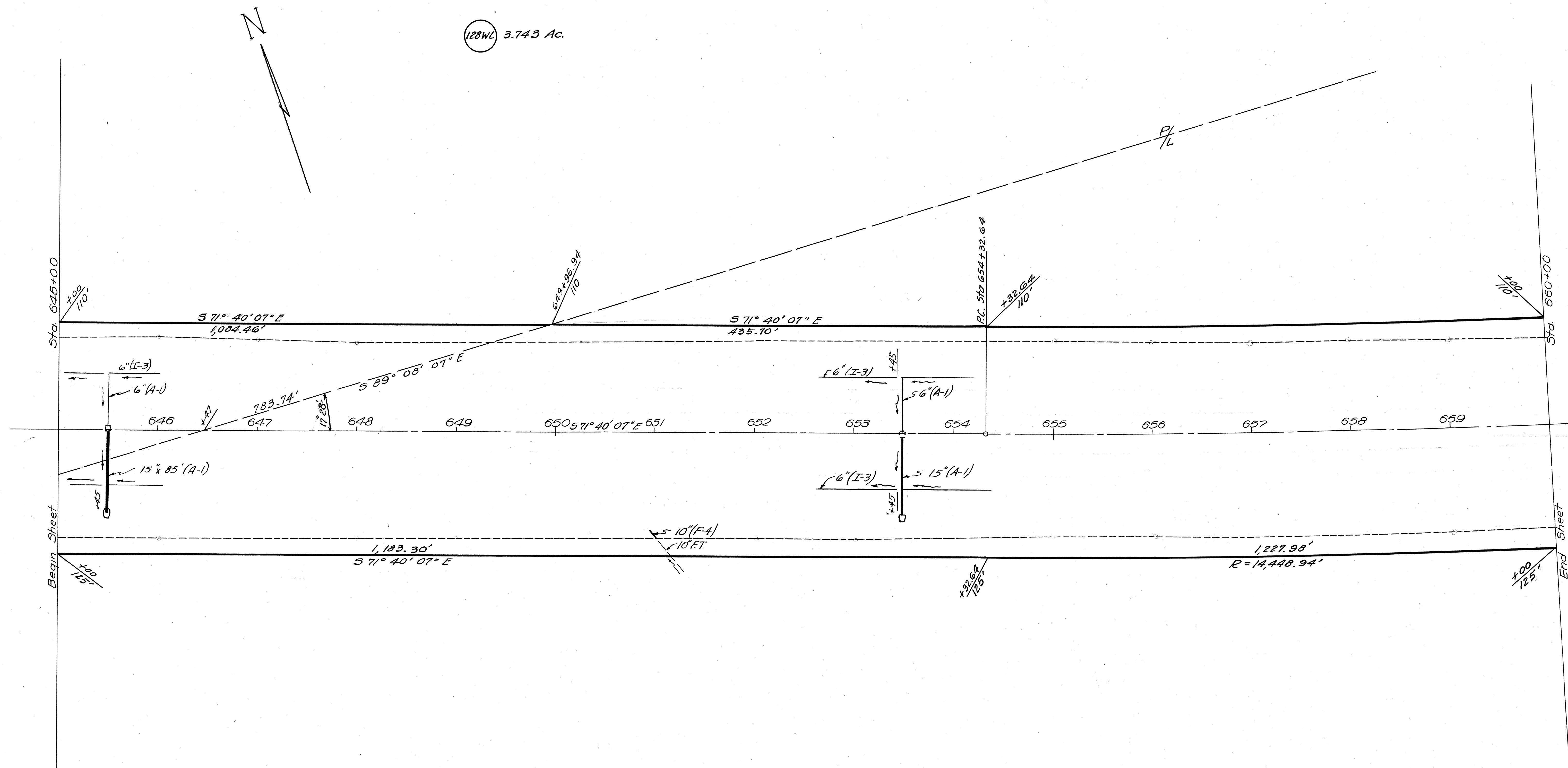
(128WL)
3.743 Ac.



Doris E. Custer

(128WL) 3.743 Ac.

10
30



G.O. Wilmore

(129WL) P = 12.113 Ac.
E = 0.844 Ac.

CURVE DATA
P.I. = Sta. 674+05.05
 $\Delta = 15^\circ 40' 50''$ Lt.
 $D = 00^\circ 24'$
 $R = 14323.94$
 $T = 1972.41$
 $L = 3920.14$
 $E = 135.16$

DORIS E. CUSTER

(130WL) $P = 9.756$ Ac.
 $E = 0.844$ Ac.

G. O. Wilmore

(129WL) $P = 12.113$ Ac.
 $E = 0.844$ Ac.
12.957

(130A) $P = 0.112$ Ac.
 $E = 0.206$ Ac.

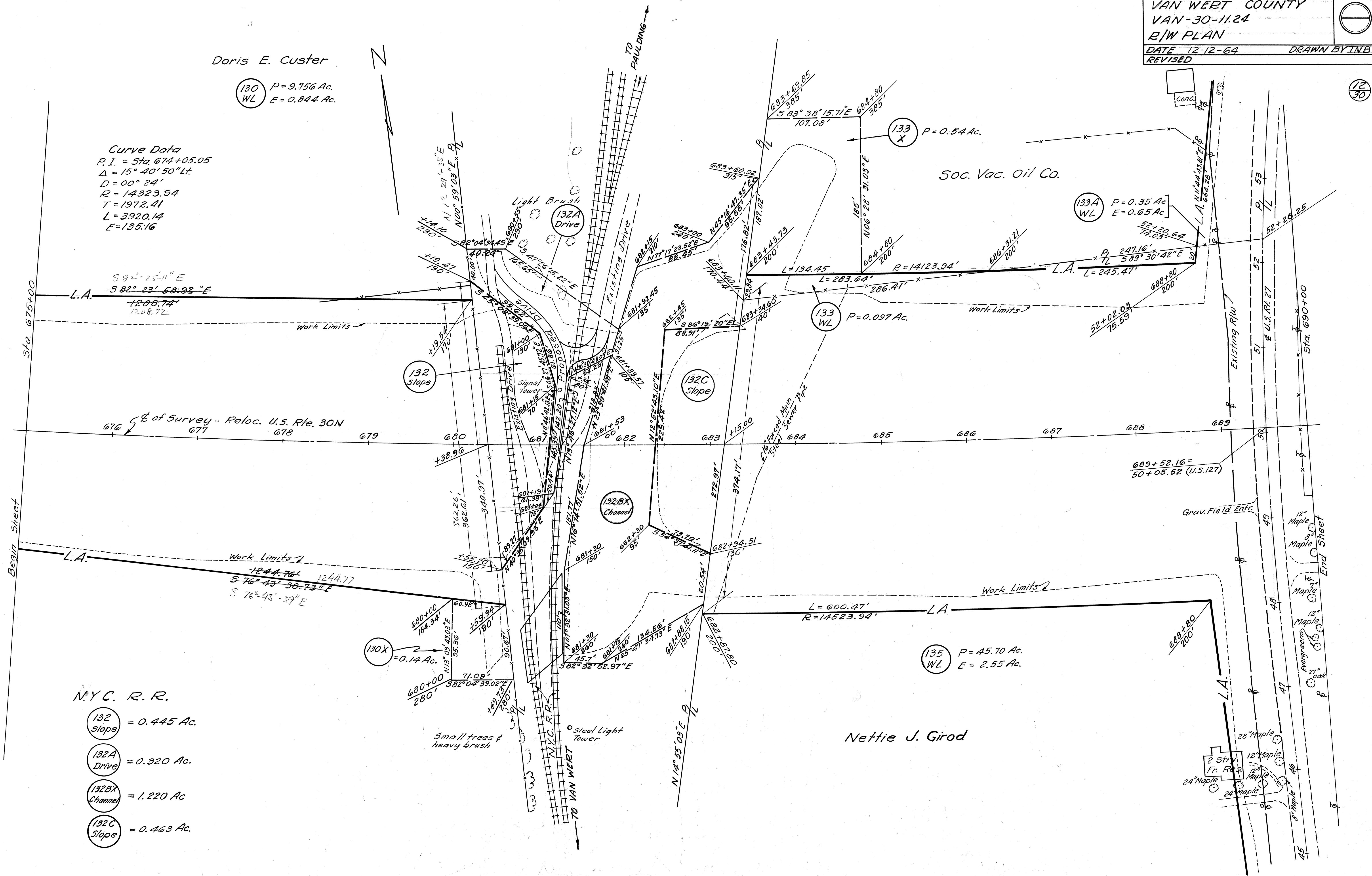
(129) $P = 0.047$ Ac.
 $E = 0.072$ Ac.
0.119

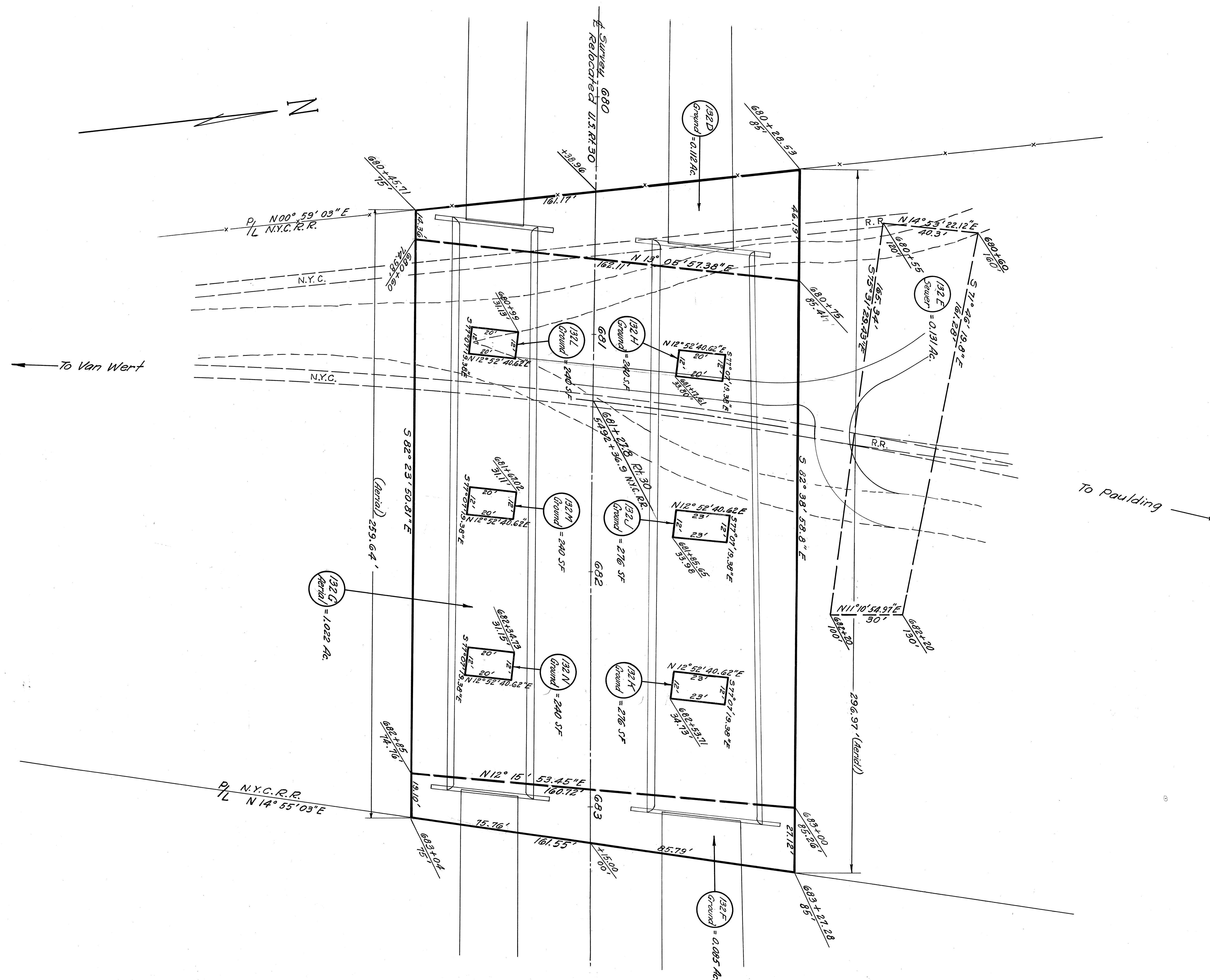
ALMA SMITH

Doris E. Custer

(130) P=9.756 Ac.
WL E=0.844 Ac.

Curve Data
P.I. = Sta. 674+05.05
 $\Delta = 15^\circ 40' 50''$ Lt.
D=00° 24'
R=14323.94
T=1972.41
L=3920.14
E=135.16







Helen R. Cox

134 P = 0.138 Ac.
E = 0.206 Ac.

134 WL P = 125 Sq. Ft.
E = 0.168 Ac.

City of Van Wert

131 P = 0.13 Ac.
E = 0.29 Ac.

131A P = 0.12 Ac.
E = 0.36 Ac.

135 WL P = 45.70 Ac.
E = 2.55 Ac.

Curve Data
P.I. = Sta. 100+02.39
 $\Delta = 31^\circ 11' 26''$
 $D_c = 8^\circ 00'$
 $T = 199.9'$
 $L_c = 389.88'$
 $R = 716.20'$
 $E = 26.37'$

Transition Data (Spiral)
P.I. = Sta. 102+64.17
 $\Delta = 9^\circ 30'$
 $\Delta_1 = 1^\circ 30'$
 $\Delta_2 = 8^\circ 00'$
 $D_1 = 1^\circ 30'$
 $D_2 = 8^\circ 00'$
 $T_1 = 123.14'$
 $T_2 = 77.33'$
 $\theta_a = 6^\circ 30'$
 $L_a = 200'$

Curve Data Ramp "A"
P.I. = 204+02.37
 $\Delta = 77^\circ 30' 57''$
 $D_c = 16^\circ 00'$
 $T = 287.43'$
 $L_c = 484.47'$
 $R = 358.10'$
 $E = 101.12'$

Curve Data Ramp "B"
P.I. = 33+98.82
 $\Delta = 47^\circ 29' 12''$
 $D_c = 14^\circ 30' 06''$
 $T = 173.79'$
 $L_c = 327.46'$
 $R = 395.10'$
 $E = 33.44'$

Curve Data Ramp "A"
P.I. = 200+45.66
 $\Delta = 124^\circ 15' 09''$
 $D_c = 23^\circ 00'$
 $T = 411.01'$
 $L_c = 540.23'$
 $R = 249.11'$
 $E = 283.72'$

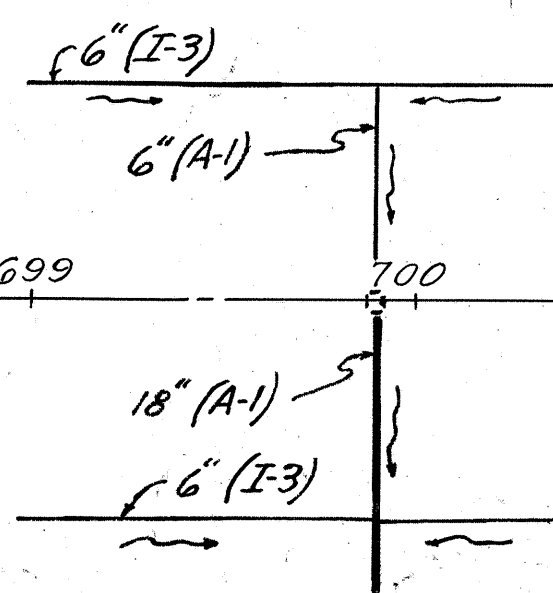
Curve Data Ramp "A"
P.I. = 195+09.13
 $\Delta = 23^\circ 00'$
 $L.T. = 134.48'$
 $S.T. = 67.71'$
 $\theta_s = 23^\circ 00'$
 $L_s = 200'$

Curve Data Ramp "A"
P.I. = 208+42.79
 $\Delta = 41^\circ 51' 14''$
 $D_c = 9^\circ 00'$
 $T = 243.44'$
 $L_c = 405.04'$
 $R = 636.62'$
 $E = 44.96'$

Sta. 190+74.65 Ramp "A" Δ
79' L.T. Sta. 690+80 Δ U.S. 30 Reloc.

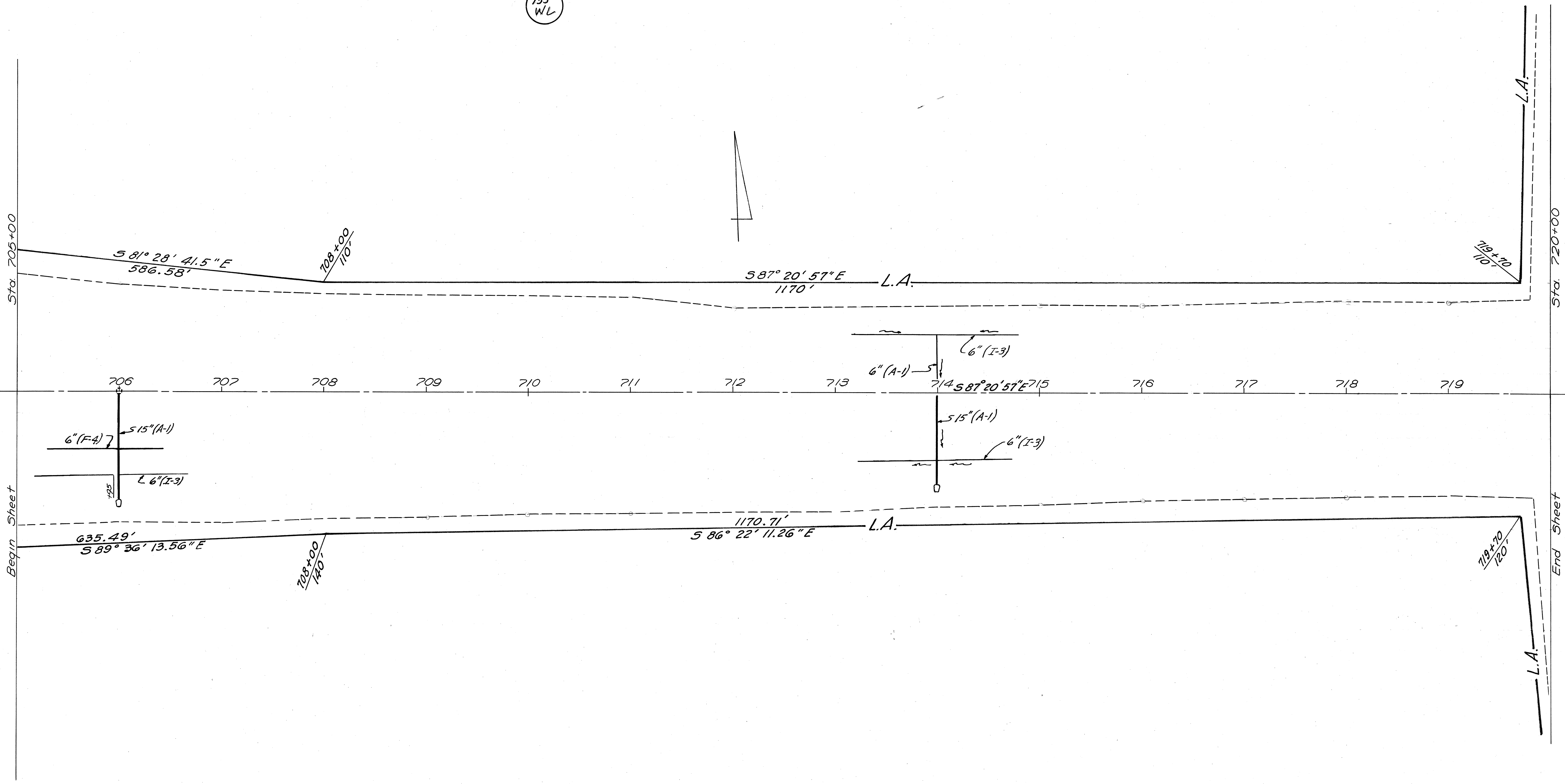
Angle from tangents

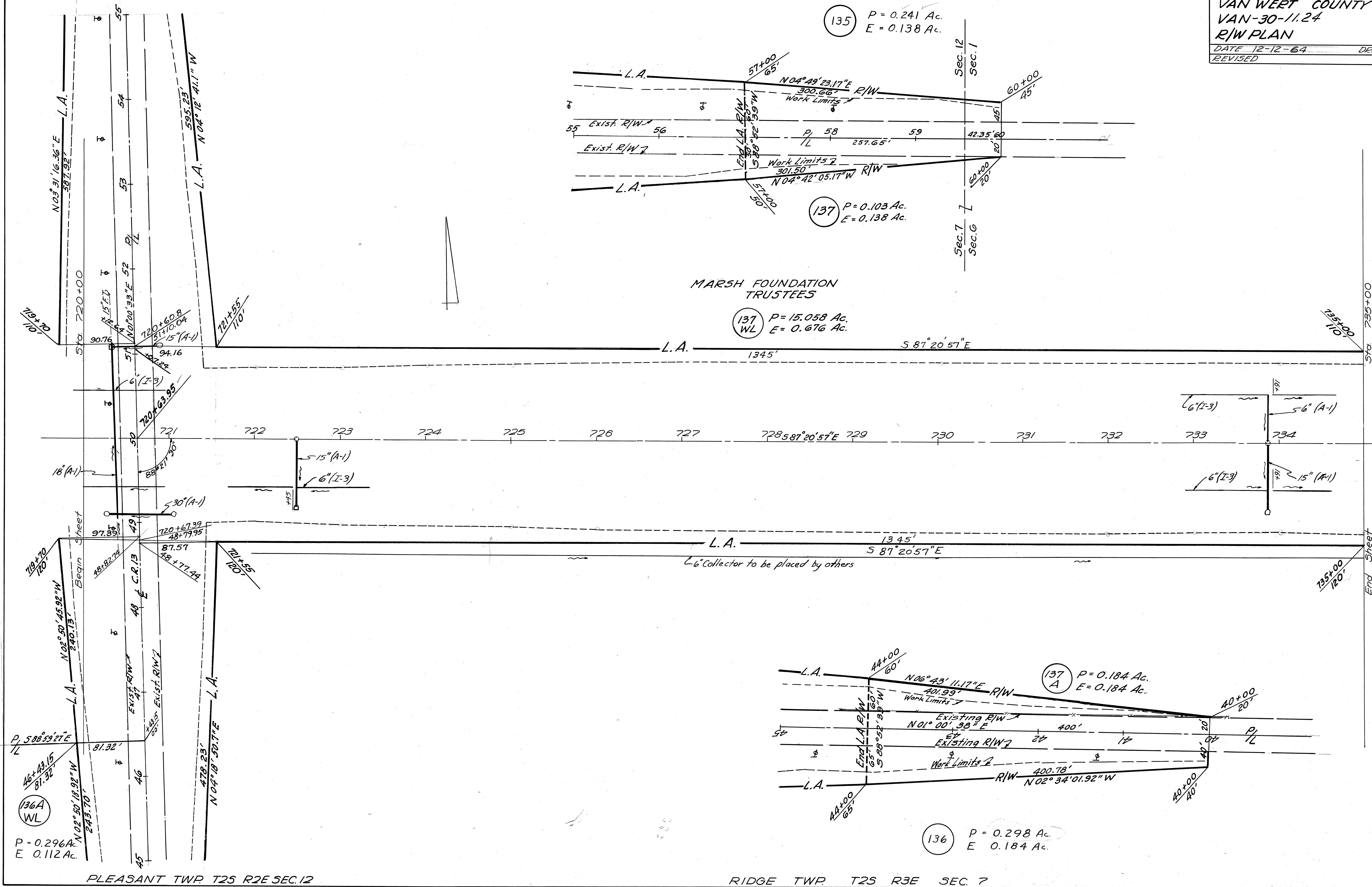
Sta. 689+52.16 Reloc. U.S. 30
Sta. 50+05.52 Exis. U.S. 127



Nettie J. Girod

135
WL





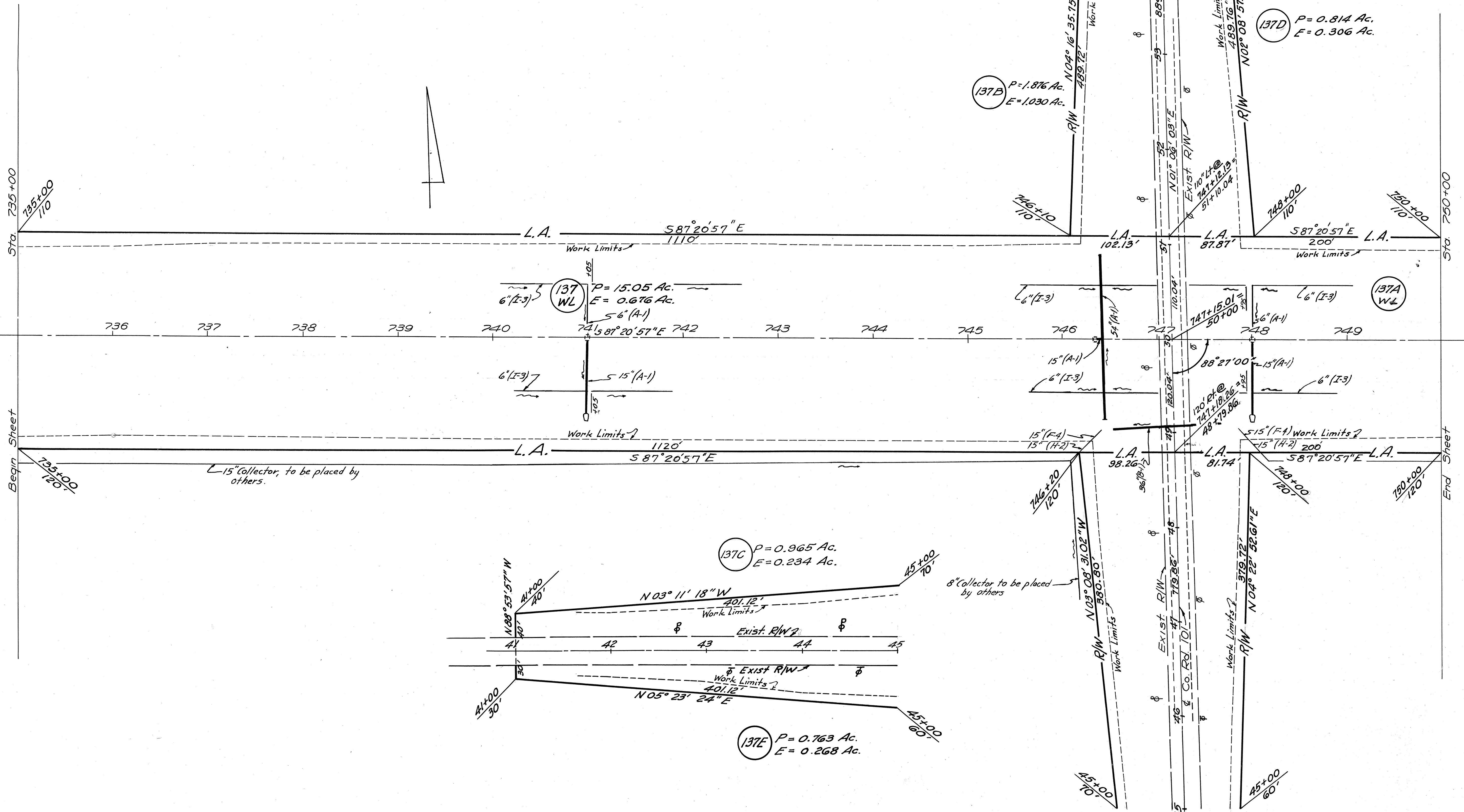
Marsh Foundation Trustees

VAN WERT COUNTY
VAN-30-11.24
R/W PLAN

DATE 12-12-64 DRAWN BY TNB
REVISED

18
30

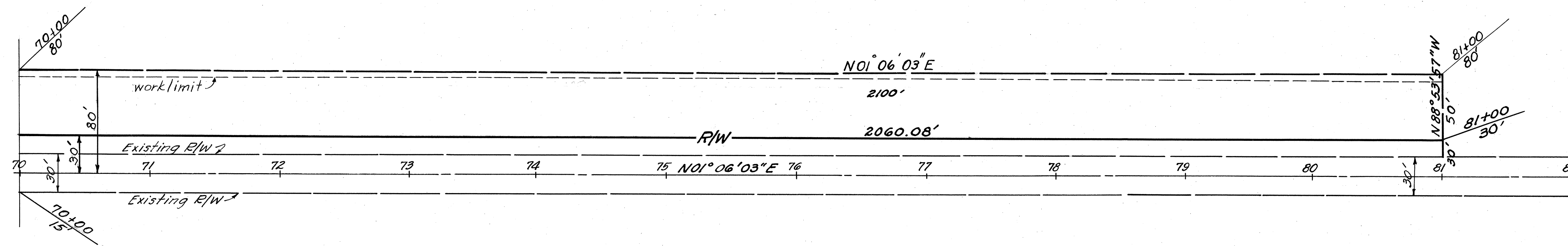
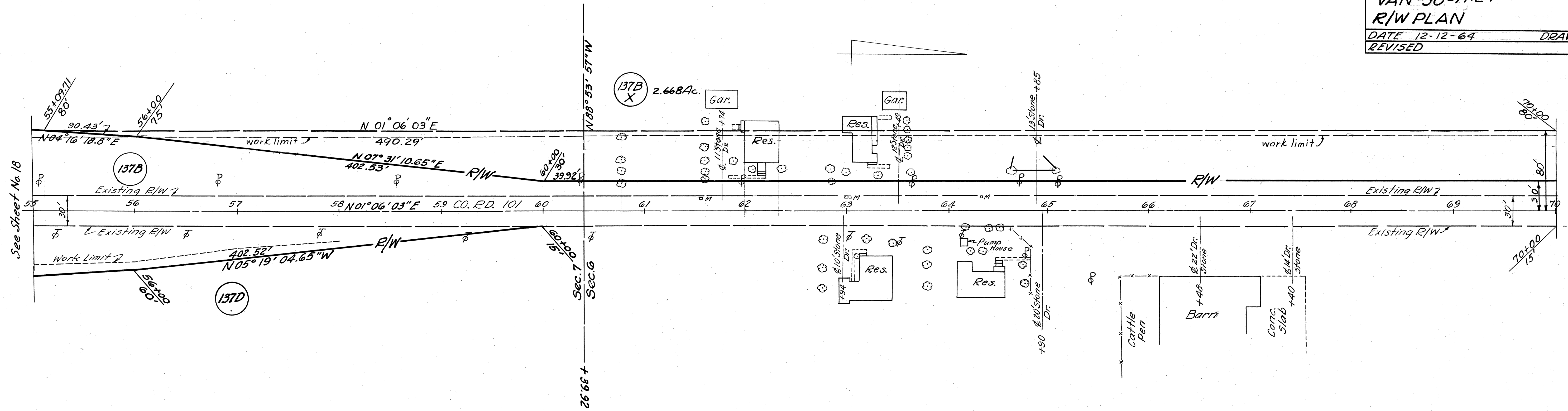
See Sheet No 19



RIDGE TWP T2S R3E SEC. 7

U.S. 30 Sta. 735+00 to Sta. 750+00

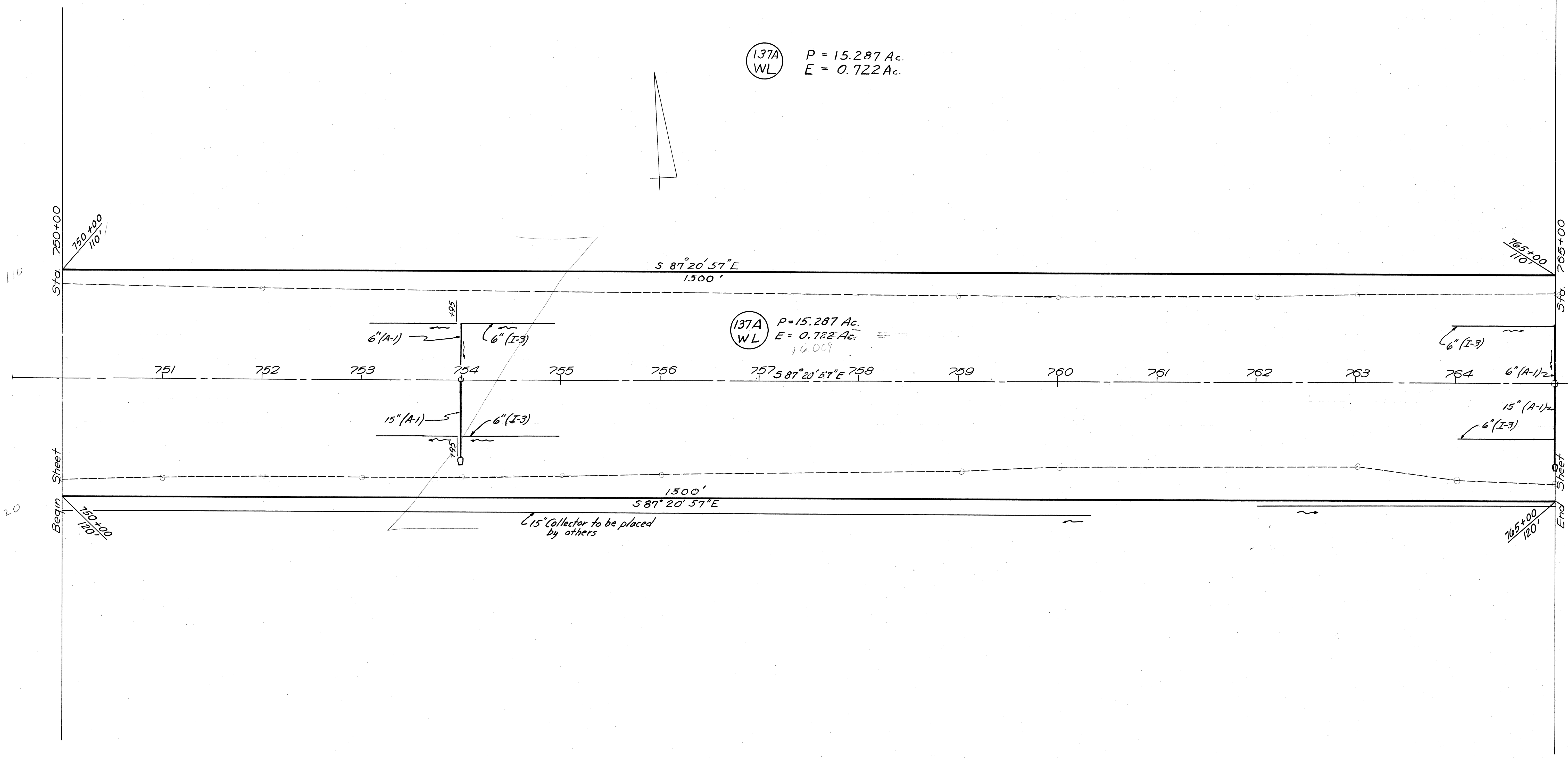
(Striped Rd. 11th)

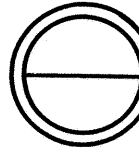


Marsh Foundation Trustees

137A
WL
P = 15.287 Ac.
E = 0.722 Ac.

137A
WL
P = 15.287 Ac.
E = 0.722 Ac.
16.007

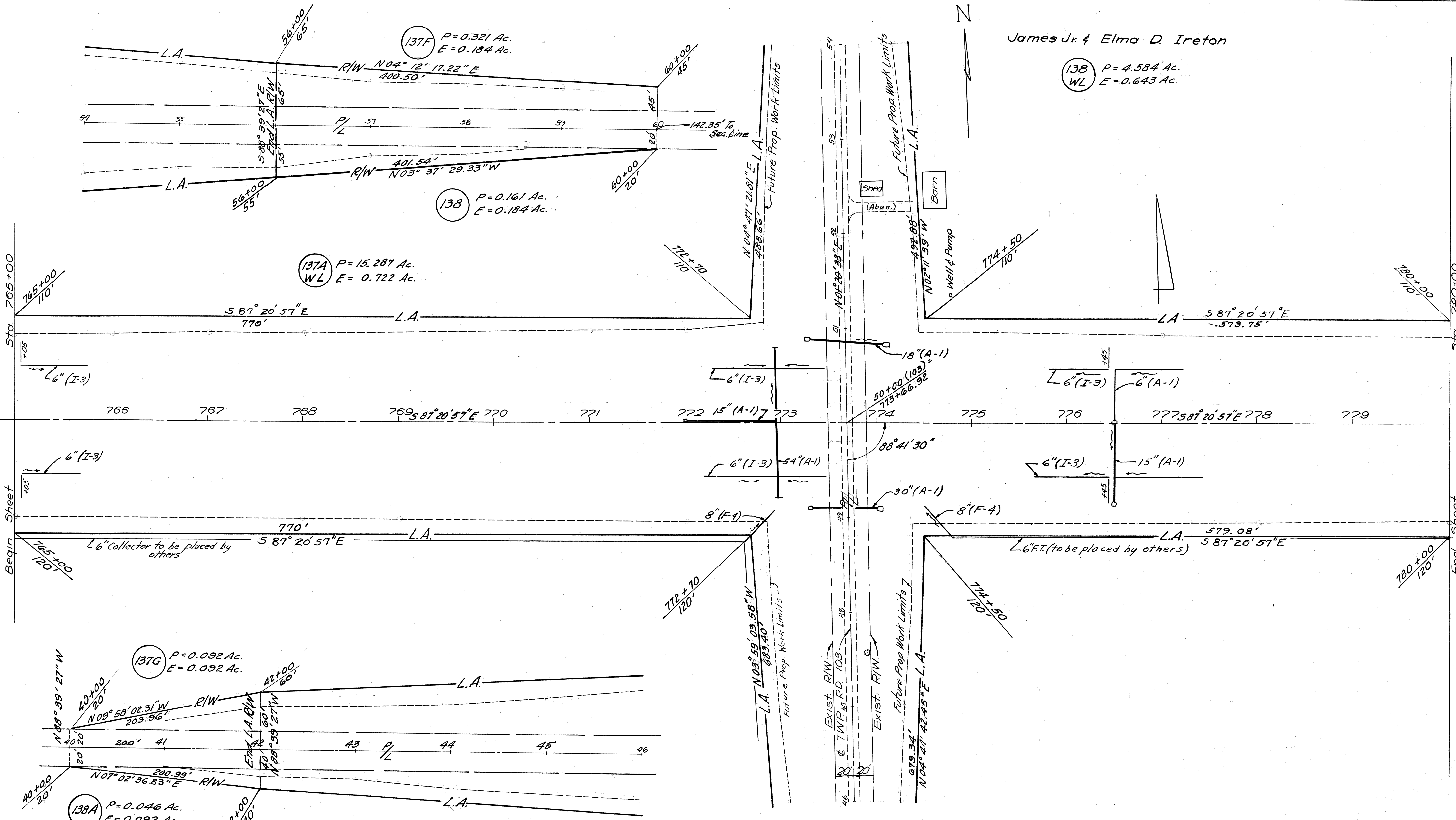




21
30

Marsh Foundation Trustees

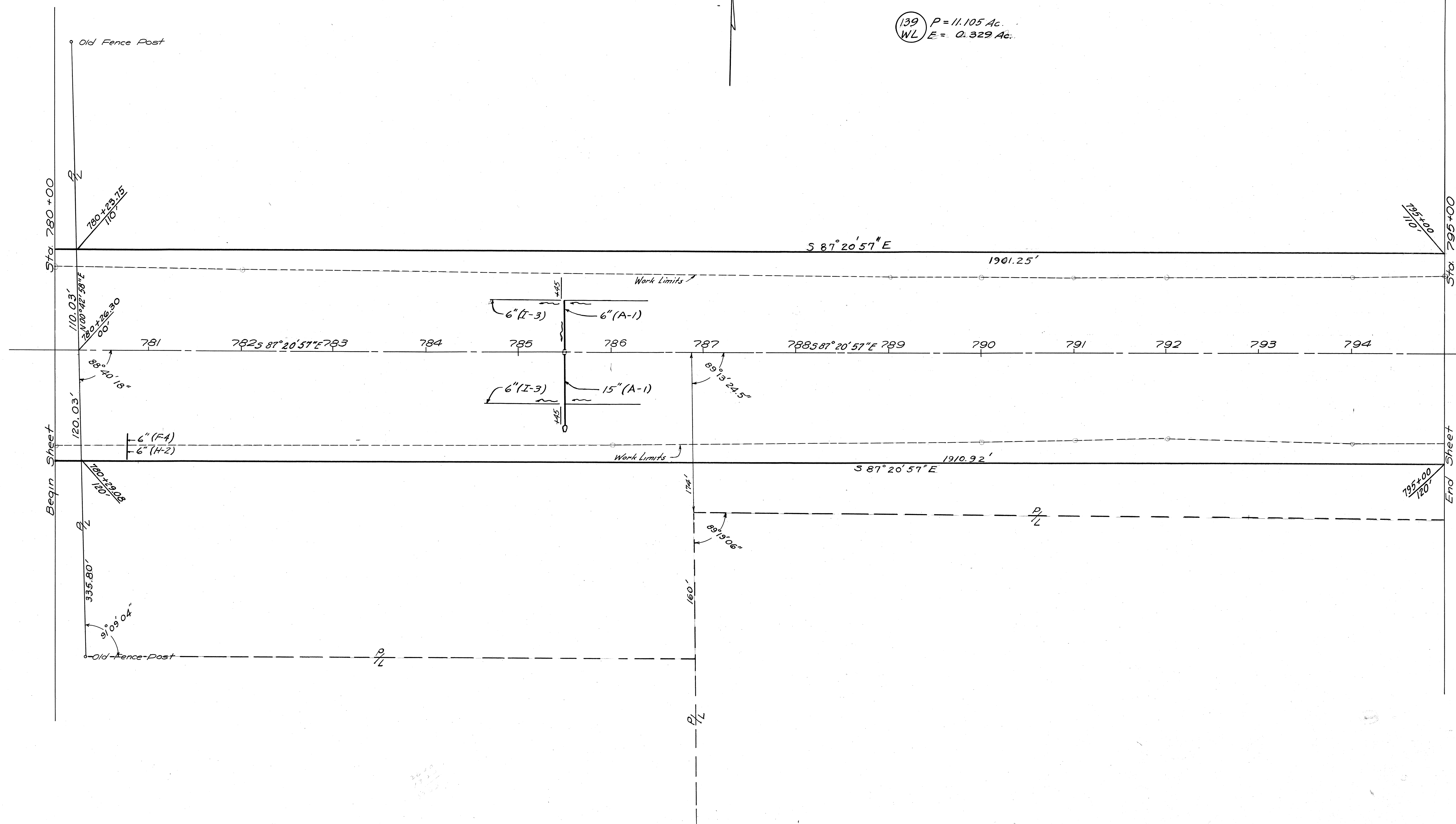
James Jr. & Elma D. Ireton



Note: Work Limits 2' outside
of indicated work limits on County Rd.

Shirley Conley Steffens

139 P = 11.105 Ac.
WL E = 0.329 Ac.



Shirley Conley Steffens

O. James & Virginia Doner

L.G. & G.P. Graber

(141) P = 0.619 Ac.
E = 0.190 Ac.

(140) P = 0.62 Ac.
E = 0.211 Ac.

(139) P = 0.161 Ac.
E = 0.184 Ac.

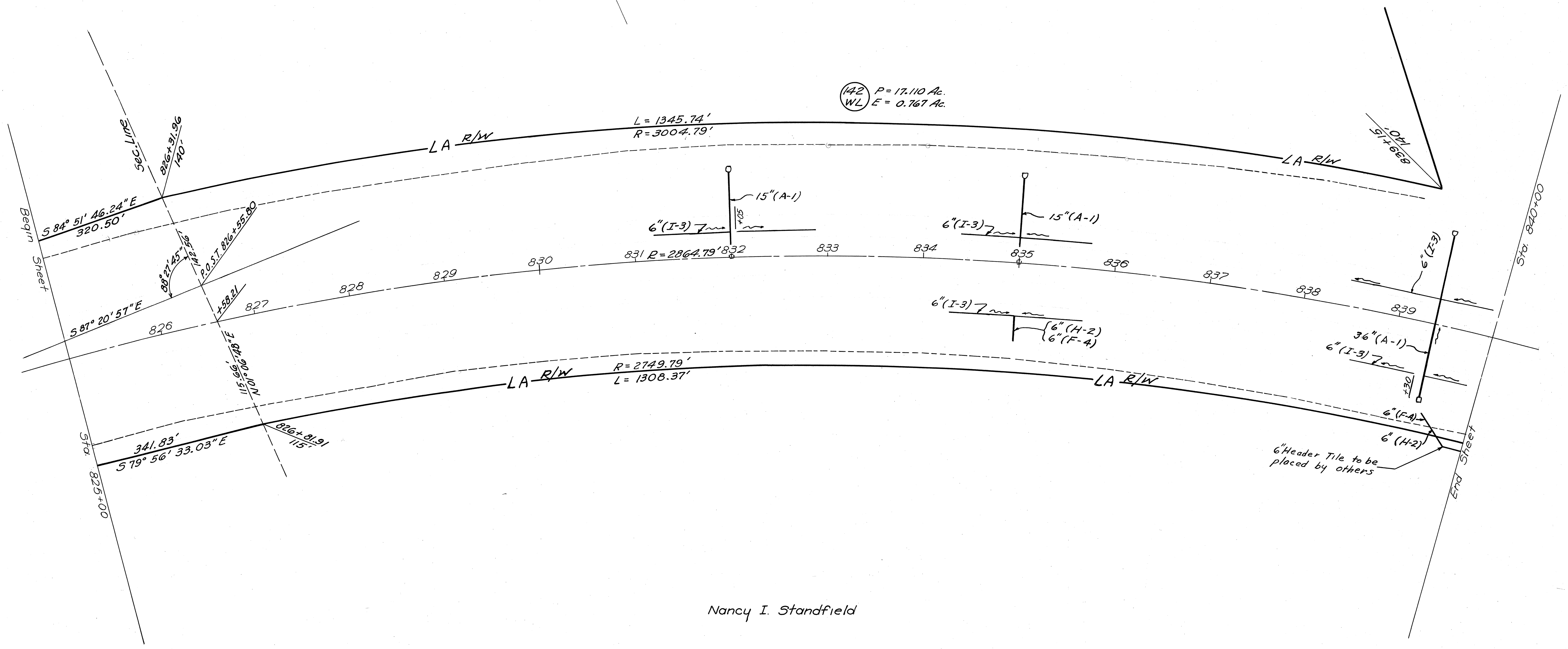
(140) P = 0.271 Ac.
E = 0.197 Ac.

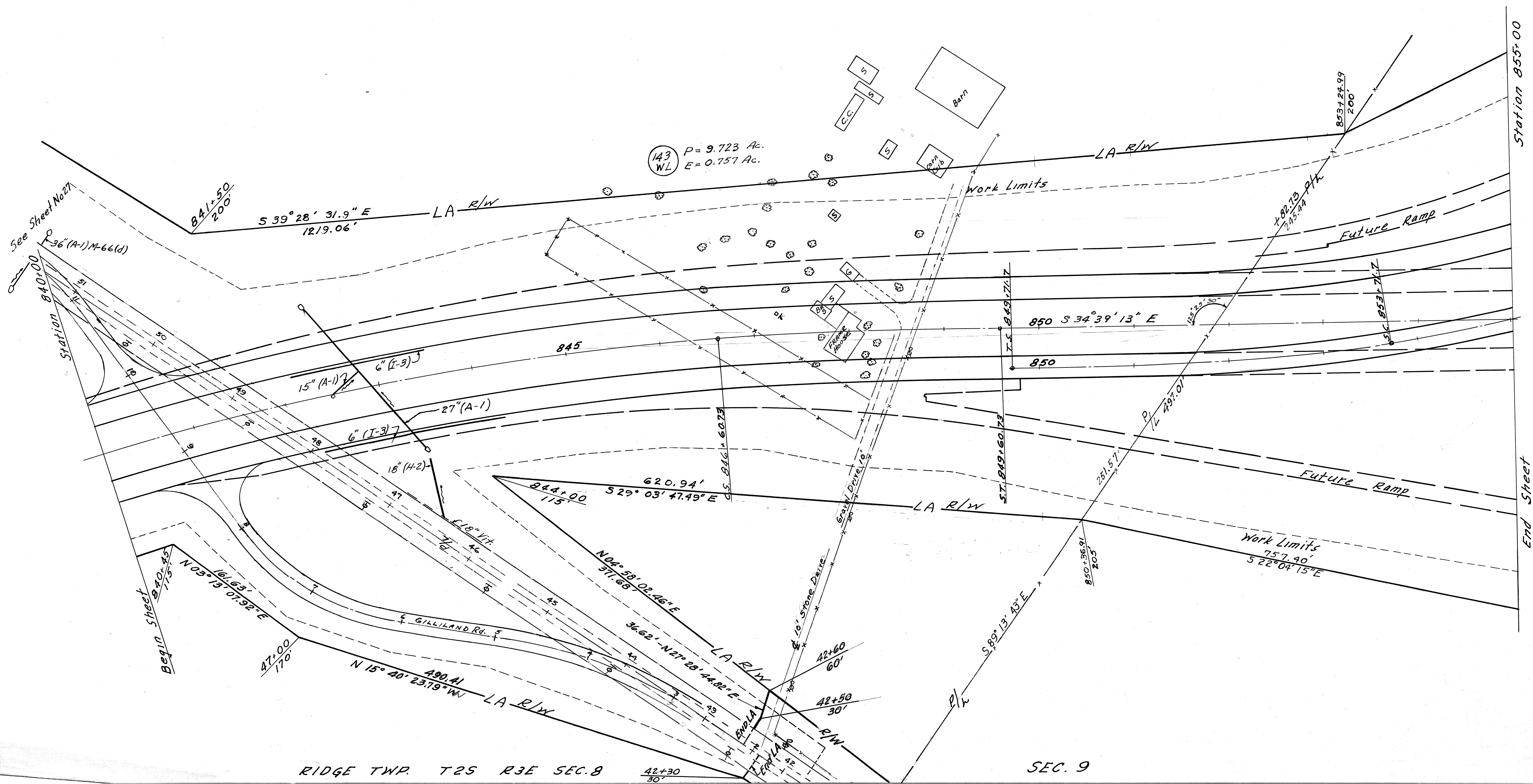
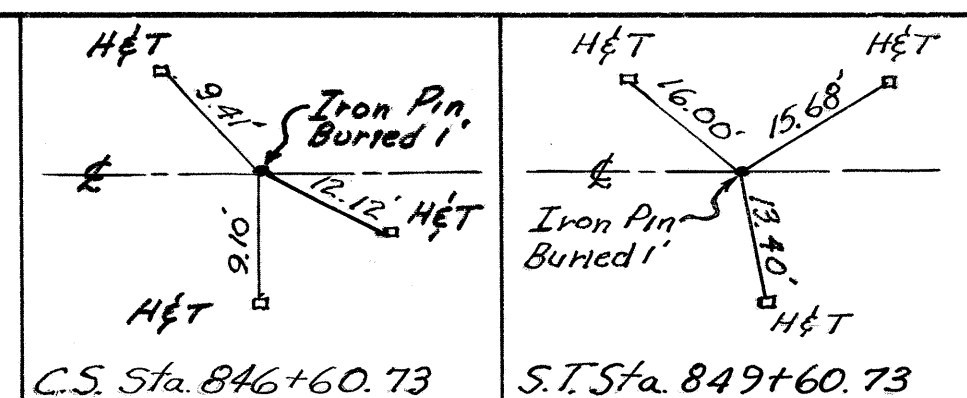
(141A) P = 7.530 Ac.
E = 0.321 Ac.

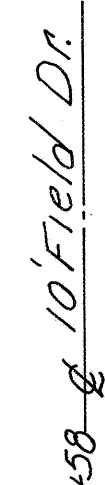
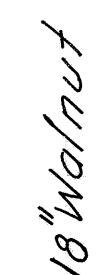
(141A) P = 0.310 Ac.
E = 0.206 Ac.

(141) P = 0.138 Ac.
E = 0.184 Ac.

P.I. Sta. 835+95.42
 $\Delta = 52^{\circ}41'44''$ Rt.
 $D_c = 2^{\circ}00'$
 $L_s = 300'$
 $R_c = 2864.79'$
 $T_s = 1569.47'$
 $L_c = 2334.78'$
 $E_s = 333.55'$







RECEIVED
OCT 22 1997

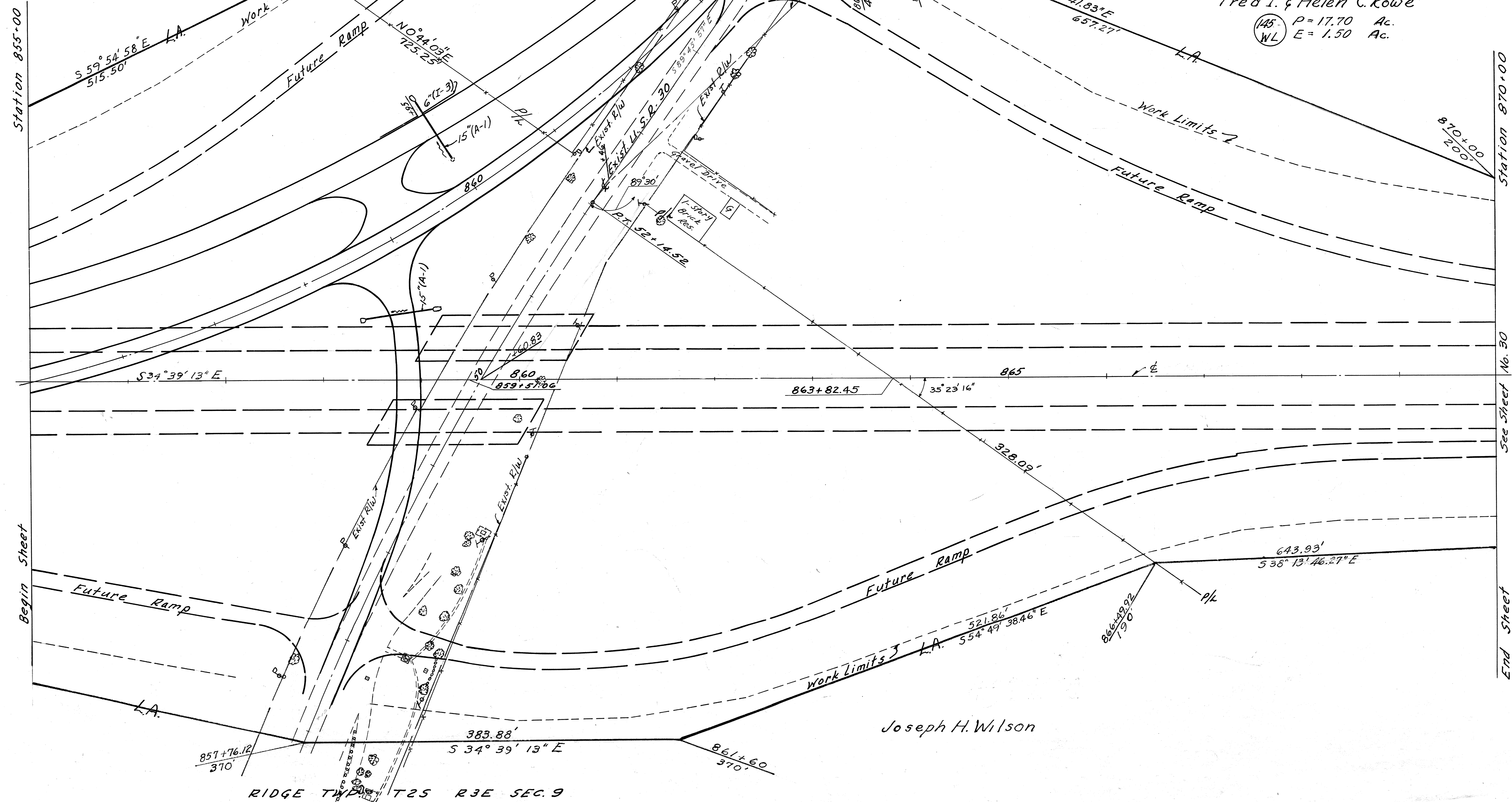
Joseph H. Wilson

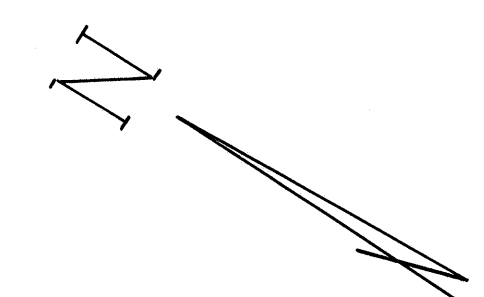
144 P = 15.781 Ac.
WL E = 1.747 Ac.

Fred I. & Helen C. Rowe

Fred I. & Helen C. Rowe

145 P = 17.70 Ac.
WL E = 1.50 Ac.





Fred I. & Helen C. Rowe

145
WL
P = 17.70
E = 1.50

